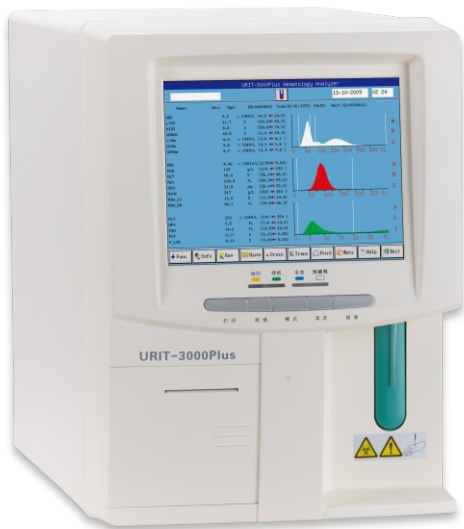
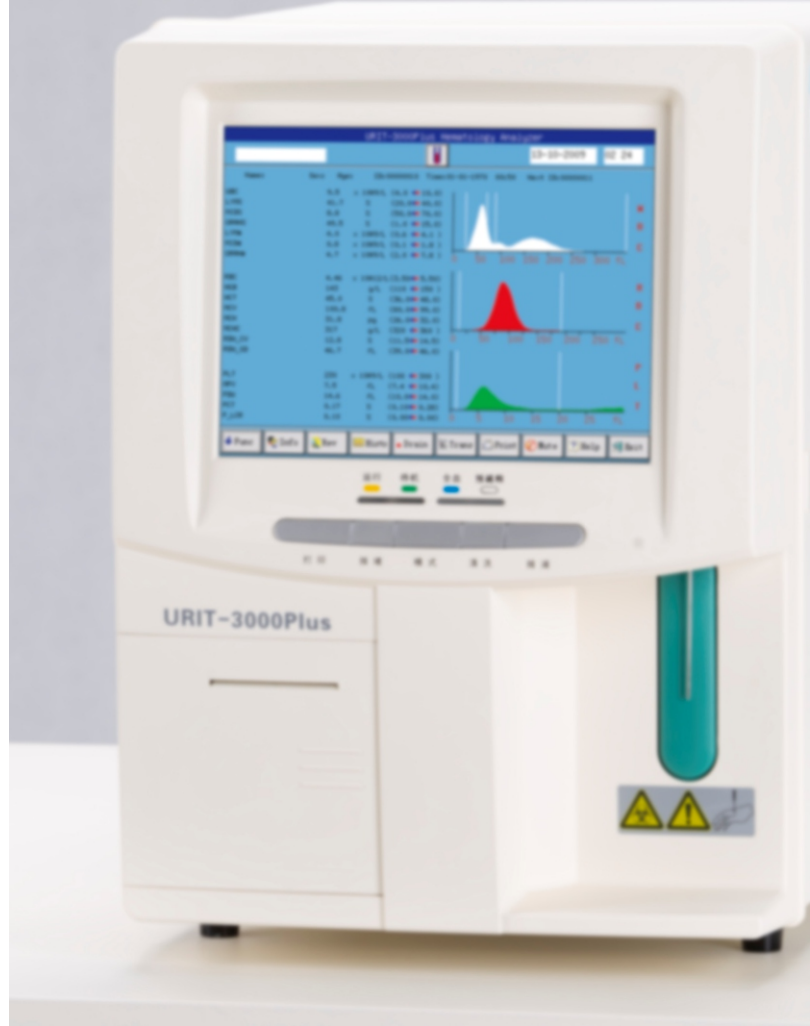


Global Diagnostics Supplier



URIT-3000Plus Hematology Analyzer

Newest update system, adopting
technology from 5-Part-Diff design

URIT-3000Plus Hematology Analyzer

Specifications

Parameters: WBC, LYM#, MID#, GRAN#, LYM%, MID%, GRAN%, RBC, HGB, HCT, MCV, MCH, MCHC, RDW-CV, RDW-SD, PLT, MPV, PDW, PCT, P-LCR, P-LCC

3-part differentiation of WBC, 21 parameters and 3 histograms

Principles of operation: WBC/RBC/PLT: Electrical Impedance
HGB: Photoelectric colorimetry

Aspiration Volume: Whole blood 10 μ L, Pre-diluted 20 μ L

Aperture Diameter: WBC 100 μ m, RBC/PLT 68 μ m

Throughput: 60 samples per hour

Data storage: More than 100,000 sample results with histograms

Alarms: Error messages

Dilution Ratio:	Whole blood	Capillary blood
WBC/HGB	1:232	1:400
RBC/PLT	1:40000	1:45000

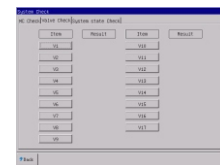
Display: 10.4 inches color LCD

Control and calibration: L-J, X, X-R, X-B four control modes, manual and auto-Calibration

Dimension: 530mm(L) x 330mm(W) x 460mm (H)

Power requirement: AC 100V – 240V, 50/60Hz, 180W

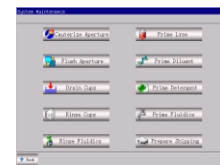
Input/Output: Support RS232, standard network port and USB
Shortcut keys with standard mouse and keyboard
Internal 57mm thermal printer,
Parallel Port and USB for external printer



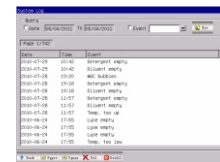
System check



Counting results



System Maintenance



System Log

Characteristics

- Large color LCD display & Linux operation system
- Support USB data backup & system upgrade
- Excellent data management with mouse and keyboard
- High efficient self checking system, low maintenance
- Support LIS and HIS with HL7 protocol

URIT Medical Electronic Co., Ltd.

Head Office

Add.: No. D-07 Information Industry District,
High-tech Zone, Guilin, Guangxi 541004,
P. R. China

Tel: +86-773-2288586 Fax: +86-773-2288580

Shenzhen Office

Add.: Room EJ, 24th Floor, New Baohui Building, Nanshan Road,
Nanshan District, Shenzhen, P.R. China

Tel: +86-755-26050853 Fax: +86-755-86036150

E-mail: export@uritest.com service@uritest.com Http://www.urit.com

